

19 July deadline for CensusAtSchool 2013 Questionnaire

The CensusAtSchool 2013 Questionnaire closes 19 July. For schools that have not registered yet, there is still time to set up teacher accounts and get students involved.

CensusAtSchool is a free and engaging online resource. It enables Year 5–12 students to collect and interrogate data about themselves. The voluntary questionnaire is conducted annually and asks non-invasive questions about students' everyday lives, interests and opinions on various topics and issues.

Among many interesting facts revealed by the CensusAtSchool 2012 Questionnaire, an overwhelming 90 per cent of students turned off the tap while brushing their teeth as a way of conserving water.

Since its national launch by the ABS in 2006, CensusAtSchool has proved to be a popular learning resource among students and teachers. It not only provides students the opportunity to



enter their own data into the questionnaire, but also to obtain a sample of the data for interpreting in classroom. Over 21,000 students across Australia completed the 2012 questionnaire.

The 2013 questionnaire includes some exciting changes. These include a new question relating to student heart rate and a new and improved teacher account system, allowing teachers to update their details online.

To get students involved teachers are invited to register at the ABS website.

www.abs.gov.au/censusatschool **ET**

Cool Australia founder awarded

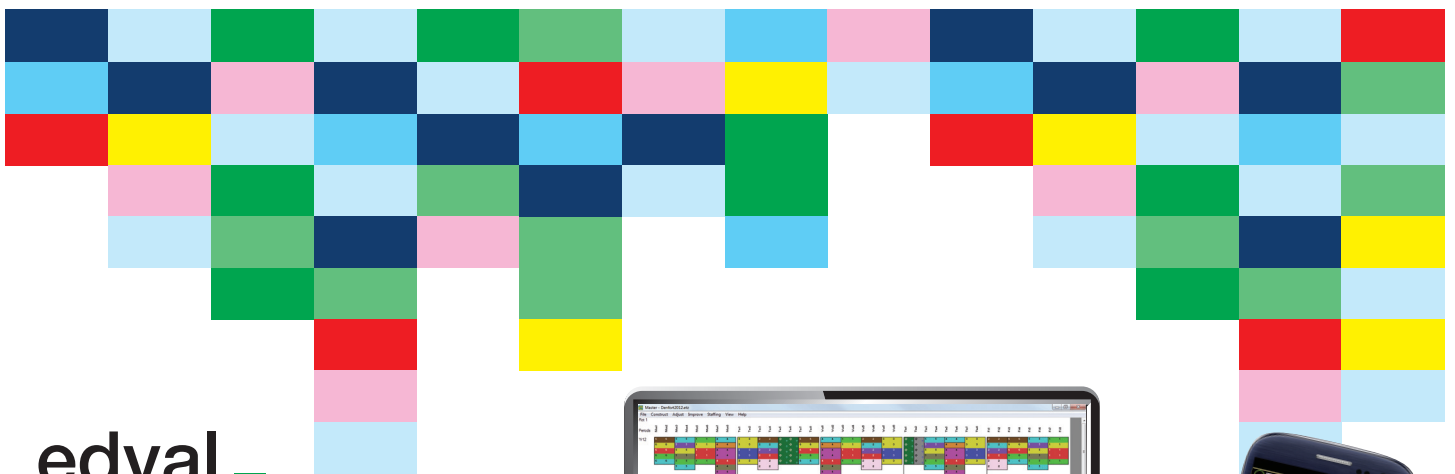
Jason Kimberley, founder of not-for-profit organisation Cool Australia has been named 2012 Sustainability and Environmental Educator of the Year by the Victorian Association for Environmental Education (VAEE).

During 2012 more than 5000 teachers downloaded Cool Australia modules from the website. In turn, 135,000 students are estimated to have seen the modules.

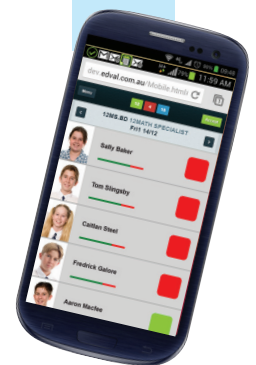
The website offers 21 modules covering energy, water, biodiversity, and waste variously suited to Grades 1 through 10.

The resources, which are written by leading teachers, curriculum writers and experts in the area of sustainability education, are aligned with the Australian curriculum. The website offers learning activities for teachers and a student toolbox.

www.coolaustralia.org



edval solves timetable puzzles



EdvalDaily EdvalStaff WebChoice EdvalPTN EdvalAttendance

www.edval.com.au www.parent-interviews.com sales@edval.com.au

Adelaide 08 8120 0855 | Sydney 02 8203 5455 | Melbourne 03 9020 3455



edval Timetables

LCD TOUCHSCREEN THE NEXT GENERATION INTERACTIVE BOARD



NEW 70" LED BACKLIT COMING SOON PRE-ORDER

MOBILE STANDS AVAILABLE



Say goodbye to the problems of projector-based interactive whiteboards and enjoy the advantages of ABI's LCD Touchscreens

- No projector needed
- No user shadows or beam glare
- No expensive replacement lamps needed
- No need to work in a darkened room
- Wall mounts included
- Full HD 1080p video display
- Optional mobile stands
- Inbuilt speakers
- Inbuilt HD tuner
- 2 Years Warranty

**42" LCD TOUCHSCREEN
CALL FOR PRICE
TSLCD42V2**

**55" LCD TOUCHSCREEN
CALL FOR PRICE
TSLCD55V2**

**65" LCD TOUCHSCREEN
CALL FOR PRICE
TSLCD65V2**

SPECIAL EDUCATION PRICING FROM ONLY \$2295 + GST

NSW CONTRACT 278: FREE FREIGHT - 30 DAYS TERMS

**NSW BUYERS: AVAILABLE ON NSW GOVT CONTRACT 278
OTHER STATES: CALL FOR NEAREST RESELLER - FREIGHT CHARGES MAY APPLY**

FOR MORE INFORMATION, CONTACT ABI BY PHONE ON 02 9938 6866 OR BY EMAIL AT INFO@ABIMAGE.COM.AU

First time meeting for Vic selective schools' staff



A professional learning day on 15th March for Victoria's selective entry government schools Nossal High School, Suzanne Cory High School, Mac.Robertson Girls' High School and Melbourne High School was a significant 'first ever' event in Victorian government education. The theme for the day was *Catering for the Needs of an Academically Select Cohort*.

Close to 500 teaching and education support

staff from the four schools met as a group for the first time to share their expertise in learning and work. The aim of the event was to make connections and engage in planning to better address the very specific needs of the academically selected students that the schools cater for.

Guest speaker was Prof John Munro, Head of Studies in Exceptional Learning and Gifted in the Graduate School of Education at The

University of Melbourne. He is a trained primary and secondary teacher and a psychologist. His research interests, teaching and publications are in the areas of literacy and mathematics learning and learning difficulties, learning internationally, gifted learning and learning disabilities, gifted learning in African and Asian cultures, gifted mathematics learning, implementing system-wide gifted education provision, instructional

Before GradeXpert



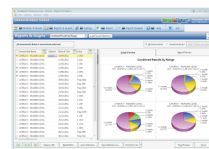
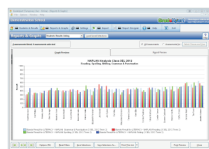
Frustrated with your paper- or Excel-based assessment tracking system or files full of important student details that you can never organise? Finding it difficult to **monitor your student and school performance**? Looking for an elegant, **easy-to-use solution** to your **student data woes**?

Then you'll **love** how easily **GradeXpert** can manage **all** your school's student **assessment results, teacher notes and observations, attachments, individual learning plans, student welfare notes, behavioural incidents, student medical details, records of parent contact** and more, all in **one central place!**

After GradeXpert



- **Instantly analyse school and cohort performance** over time and quickly **identify underperforming students** and those requiring **extension**.
- Track **NAPLAN** results, **National Curriculum** results, **on-demand testing** results and virtually **any other type of assessment result**.
- Results **stay with students** from year to year.
- Used by **K-12 schools** countrywide and **integrates** with your **existing systems**.
- **Great value** for any size school and **free training and support** is included!



GradeXpert

Australia's **most advanced** student assessment tracking and analysis tool. **Ever.**

Call us now on **1300 762 455** to arrange a **free demonstration** at your school, or visit www.gradexpert.com.au to download a **free demo version**.



leadership and school improvement.

Prof Monro presented on the topic *Gifted and talented knowing and understanding: what do they look like?* The currency for transacting in the classroom is knowing and understanding. Students show evidence of them and teachers infer them. What does gifted and talented knowing and understanding look like? The 'expert +' knower model provides a

framework for describing this.

Ian Burrage also presented. He is Executive Director, Priority Policy at the Victorian Department of Education and Early Childhood Development. He has had 20 years of experience in policy analysis and advice, variously covering vocational education and training, schools and early childhood development. He has worked in policy advice in Victoria

including Department of Premier and Cabinet, at the national level and in England.

The day was filled with curriculum, pedagogy and wellbeing conversations. New connections were made, further professional learning and networking opportunities were created and it was decided that this would become an annual event. Nossal High School will host the 2014 Select Entry Conference in Berwick. **ET**

Australian Museum 2013

The Australian Museum is pleased to present an extensive range of science, cultural history and art programs.



Curriculum-linked programs can be explored in our amazing permanent exhibitions: *Dinosaurs, Surviving Australia, Skeletons, Birds & Insects, Planet of Minerals, Search & Discover* and *Indigenous Australians*.

Temporary exhibitions include *Alexander the Great: 2000 years of treasures* (until 28 April 2013), *Menagerie* exhibition of contemporary Indigenous sculpture (until 2 March 2014) and *Wildlife Photographer of the Year 2012* revealing the wonders and survival of the natural world (8 June – 7 October 2013).

Australian Museum
 6 College Street Sydney NSW 2010
 Open daily 9.30 am – 5.00 pm
 t 02 9320 6163 f 02 9320 6072
www.australianmuseum.net.au



DIGISTORM EDUCATION



AVAILABLE FOR YOUR SCHOOL

Give students & parents access to:

- Daily Notices
- Calendar Events
- Campus Maps (GPS)
- Newsletters
- Contact Details
- Plus much more

Call us on:
(07) 5508 2929

Visit:
digistormed.com.au

CUSTOMISED IPHONE, IPAD & ANDROID APPS FOR SCHOOLS

ClickView now in the Cloud

ClickView 24-7 Cloud offers schools 14 days of TV programs continuously and automatically recorded from 18 free-to-air digital channels including Ten, Nine, Seven, ABC, SBS and NITV. The automatic recording means teachers don't miss any TV programs relevant to their curriculum and constantly have new and up-to-date video content to use in their lessons.

For schools that already have the ClickView 24-7 hardware, using 24-7 Cloud in conjunction with the 24-7 hardware product provides access to additional and regional channels that are not yet available on 24-7 Cloud, enabling educators to record from a total of 29 Freeview TV channels.

Teachers using ClickView 24-7 Cloud are provided with a Personal WorkSpace – a web-application where they can edit and tailor TV programs using ClickView Cloud Video Editor. This function allows teachers to ensure videos are appropriate for their students' educational level and age. They can also remove ads and capture specific parts of different TV programs that are relevant to the subject they're teaching.

ClickView 24-7 Cloud comes with 500 GB of ClickView Online Cloud storage space to allow schools to create a video library featuring



content from Australia's leading broadcast channels. Digital videos stored on the ClickView Online Cloud service can be used and shared with next generations of students and teachers.

Harvey Sanchez, CEO of ClickView said, "The amount and quality of TV programs available today is outstanding, which is why it

is so important for educators to have 'always-on' access to them."

ClickView is offering schools a free seven-day trial for the 24-7 Cloud. Register for the trial at the website:

www.clickview.com.au >products >free trial **ET**

An advertisement for WiLAS. At the top, there is a red banner with the WiLAS logo and a hand holding a smartphone. Below, a diagram shows a school campus with several buildings. Red circles are drawn around each building, and a hand holding a smartphone is shown with red signal waves emanating from it. A megaphone icon is positioned above a speech bubble that says "EVACUATE! GO TO YOUR EVACUATION ASSEMBLY AREA." Below the diagram, the text reads: "Imagine being able to raise a Lockdown or Evacuation alarm with the push of a button... ...no matter where you were in your school grounds." At the bottom, contact information is provided: "Visit us online at: www.schoollockdown.com.au Email us at: sales@emergencyalertsyste.ms.com.au Or call us on: (02) 8037 5500".

**Imagine being able to raise a Lockdown or Evacuation alarm with the push of a button...
...no matter where you were in your school grounds.**

Visit us online at: www.schoollockdown.com.au
Email us at: sales@emergencyalertsyste.ms.com.au
Or call us on: (02) 8037 5500

An advertisement for Eureka Skydeck. The background is a night view of a city skyline with a prominent skyscraper. The text reads: "TAKE LEARNING TO A HIGHER LEVEL EDUCATION WITH ALTITUDE". Below this, a yellow box contains the text: "FREE ONLINE RESOURCES Free to download for your students today!". To the right, a white box contains the text: "Discover more about the amazing city of Melbourne with our [Online Resources](#) We have a wide range of activities for students of all levels." At the bottom, contact information is provided: "For more information and class bookings contact our Educator: (03) 9693 8810 schools@eurekaskydeck.com.au Or visit us online at www.eurekaskydeck.com.au Bookings essential. Applies to Primary and Secondary students only." The Eureka Skydeck logo is in the bottom right corner.

TAKE LEARNING TO A HIGHER LEVEL
EDUCATION WITH ALTITUDE

FREE ONLINE RESOURCES
Free to download for your students today!

Discover more about the amazing city of Melbourne with our [Online Resources](#)

We have a wide range of activities for students of all levels.

For more information and class bookings contact our Educator:
(03) 9693 8810
schools@eurekaskydeck.com.au

Or visit us online at
www.eurekaskydeck.com.au

Bookings essential. Applies to Primary and Secondary students only.

EUREKA SKYDECK 88

Powerful HSC exam features added to EdvalDaily timetabling

The NSW HSC exam timetable covers over 70,000 students. Spacing the exams out evenly and reducing clashes is critical to maximising student exam quality is critical. Edval both provides the technology for scheduling the exams and assists the NSW Board of Studies in their construction.

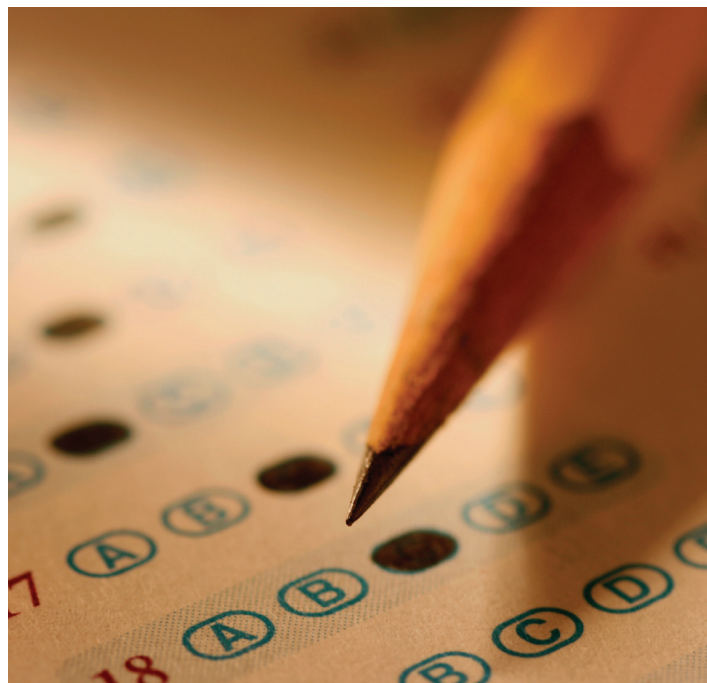
As a direct result of adopting Edval technology, key aspects of the HSC timetable have been significantly improved compared to earlier years and customer satisfaction increased.

The many technical challenges, such as external marking venues having pre-booked dates and avoiding religious holidays, are easily accommodated.

The majority of features developed for the Edval State examination module have been added to technology used at the school level. EdvalDaily users can now specify fine-grained requirements about their examination schedules and use the intensive algorithms contained within the product to automatically generate an examination schedule in minutes.

The reduction in time to construct an exam timetable is good, as is the ability for the system to reduce the financial cost of exam supervision. However, the greatest benefit is the production of educationally superior timetables to provide students with a better opportunity for their study and allow them to complete their exams in a more relaxed fashion.

www.edval.com.au 



ADD YOUR EMBLEM FOR FREE

Our outdoor clocks are designed and manufactured in Australia. They can be customized with your school emblem & colours.

Choose a colour to suit your school!

The perfect school gift

- Outdoor play area
- Classroom
- Assembly hall
- Canteen.

Features:

- Acrylic safety lense
- Battery operated
- Water resistant
- Stainless steel security screws.

\$499.00

incl. GST


540mm Diameter

Purchase by 30/6/13 and add your EMBLEM - FREE
www.sydneyclockco.com.au



DESIGNED & MANUFACTURED IN AUSTRALIA BY THE SYDNEY CLOCK COMPANY

Sydney Clock Company • Australian Designed and Manufactured Clocks.
 P: (02) 4861 7265 | F: (02) 8246 6624 | E: info@sydneyclockco.com.au



UNSW Global ICAS

Measuring your achievement

Never Stand Still

Celebrate your students' progress

Confirm your students' academic strengths and weaknesses. Compare your cohort's performance to other years and state averages. Celebrate their success through the independent, skill-based **International Competitions and Assessments for Schools (ICAS)**.

Computer Skills English Mathematics Science Spelling Writing

Detailed, fully downloadable performance reports inform all your educational development needs. Enrol full cohorts and qualify for a 10% discount on entry fees.

Recognition is achieved through the award of certificates, medals and bonus ATAR points for entry to UNSW for medallists in years 11 and 12.

Test preparation is available too through our **Practice Online** facility.



Simply scan the QR code or visit our **website**



More information is available from Educational Assessment Australia on 02 8344 1010 or email info@eaa.unsw.edu.au

www.eaa.unsw.edu.au

